



Série - LA2B

Especificações

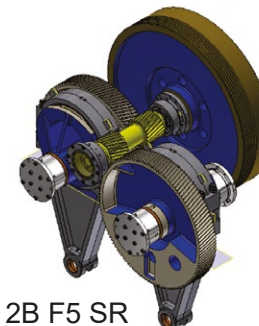
Especificaciones

Features

CINEMÁTICA CINEMÁTICA KINEMATICS



LA 2B F5 DR



LA 2B F5 SR

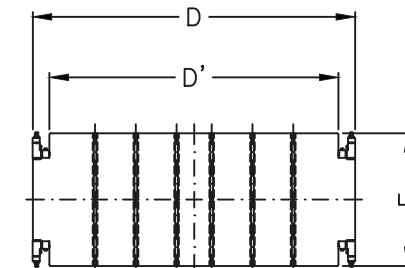
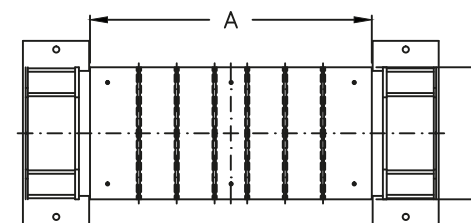
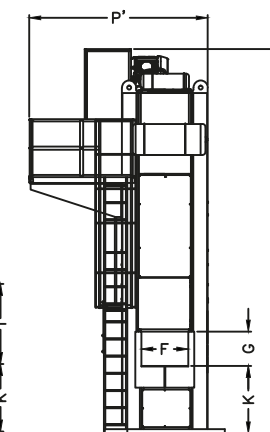
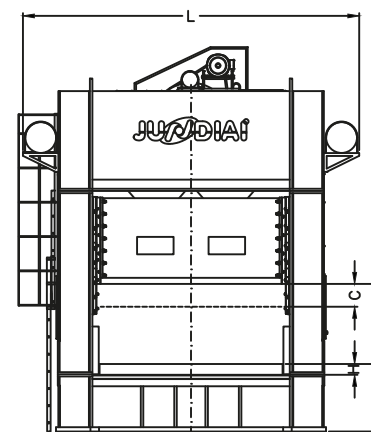
Capacidade	t	350 F5 SR PJ756	350 F5 SR PJ756-C	350 F5 SR PJ893-G	400 F5 SR PJ719-A	500 F5 SR PJ759-B	500 F5 SR PJ760	500 F5 SR PJ859	600 F5 DR PJ762	600 F5 DR PJ763	600 F5 SR PJ766	600 F5 SR PJ768	600 F5 DR PJ977	600 F5 SR PJ914	600 F5 DR PJ769
Curso do martelo															
Carrera del martillo	mm	400	250	400	400	400	250	400	600	500	300	200	400	350	600
Stroke length															
Velocidade															
Velocidad	gpm	25 a 35	25 a 35	25 a 35	25 a 35	20 a 30	20 a 30	20 a 30	15 a 25	15 a 25	20 a 30	25 a 35	15 a 25	20 a 30	15 a 25
Speed															
Mesa															
Mesa	mm	2500x1300	2700x1300	2700x1300	2500x1200	3000x1500	2500x1200	3770x1500	4000x1800	3770x1500	3000x1500	2500x1300	3500x18000	3500x11000	3500x2000
Bolster															
Altura de trabalho															
Altura de trabajo	mm	8	8	8	10	10	10	15	15	15	10	10	15	10	15
Working height															
Regulagem martelo															
Ajuste del martillo	mm	200	200	200	200	300	300	300	300	300	300	200	300	300	300
Slide adjustment															
Distância máx. mesa x martelo															
Distancia max. mesa y martillo	mm	1400	950	1050	1400	1500	1050	1200	2000	1600	1200	800	1600	1100	1700
Bolster to slide max. distance															
Altura ferramenta fechada															
Altura del troquel cerrado	mm	1000	700	650	1000	1100	800	800	1400	1100	900	600	1200	750	1100
Die Height (S.D.A.U.)															
Altura piso à mesa															
Altura del piso a la mesa	mm	1180	1180	1180	1235	1235	1235	1235	1235	1235	1235	1235	1235	1235	1235
Floor to bolster height															
Potência do motor															
Potencia del motor	cv	40	40	40	40	60	60	60	75	75	75	75	75	75	100
Main motor															
Peso aproximado															
Peso aproximado	kg	52000	51000	50000	53300	64000	57000	81000	115000	110000	90000	81000	115000	95000	140500
Approximate weight															

Dimensões

Dimensiones

Dimensions

Modelo Modelo Model	A	B	C	D	D'	E	F	G	H	I	K	L	M	O	P	P'
LA2B 350 F5 SR (PJ756)	2500	1300	400	-	2500	1300	720	600	190	1400	1180	5600	-	5600	-	3450
LA2B 350 F5 SR (PJ756-C)	2700	1300	250	-	2700	1300	720	600	190	950	1180	5500	-	5600	-	3450
LA2B 350 F5 SR (PJ893-G)	2700	1300	400	-	2700	1300	1000	700	150	1050	1180	5500	-	5550	-	3450
LA2B 400 F5 SR (PJ719-A)	2500	1200	400	-	2500	1200	720	600	190	1400	1235	5400	-	7400	-	3300
LA2B 500 F5 SR (PJ759-B)	3000	1500	400	-	3000	1500	1000	610	190	1500	1235	7000	-	8200	-	3450
LA2B 500 F5 SR (PJ760)	2500	1200	250	-	2500	1200	800	510	190	1050	1235	7000	-	6500	-	3450
LA2B 500 F5 SR (PJ859)	3770	1500	400	-	3770	1500	1000	610	190	1200	1235	8000	-	7800	-	3450
LA2B 600 F5 DR (PJ762)	4000	1800	600	-	4000	1800	1300	620	190	2000	1235	7400	-	7800	-	3700
LA2B 600 F5 DR (PJ763)	3770	1500	500	-	3770	1500	1000	610	190	1600	1235	7200	-	8300	-	3400
LA2B 600 F5 SR (PJ766)	3000	1500	300	-	3000	1500	1000	610	190	1200	1235	6400	-	7300	-	3400
LA2B 600 F5 SR (PJ768)	2500	1300	200	-	2500	1300	1000	450	155	800	1235	5900	-	6600	-	3400
LA2B 600 F5 DR (PJ840)	4000	1800	350	-	4000	1800	1300	620	190	1250	1235	7400	-	7000	-	3700
LA2B 600 F5 SR (PJ914)	2500	1300	200	-	2500	1300	1000	450	250	800	1235	5900	-	6600	-	3400
LA4B 600 F5 DR (PJ769)	3500	2000	600	-	3500	2000	1100	810	200	1700	1235	6900	-	8500	-	3900



MESA
MESA
BOLSTER

MARTELO
MARTILLO
SLIDE

Portugues

Español

English

F5 - Curso Fixo / Engrenagem

F5 - Fixed Course / Gear

F5 - Carrera fija / Engranaje